

Sample Bottle Assembly

One of a Kind

Unique sample bottle assembly with an integrated Valbow® was designed to transport sterile samples from production areas to laboratory facilities or QA/QVC locations without exposure to contamination solving a number of process problems and has become an industry standard. It is designed for those that prefer a reusable component over one that is disposable.

Sample bottles assemblies are lightweight and can be provided with any number of options including different bottle sizes, color coded caps, and unusual fabricated or machined one-piece valbow configurations which are all fully autoclavable.

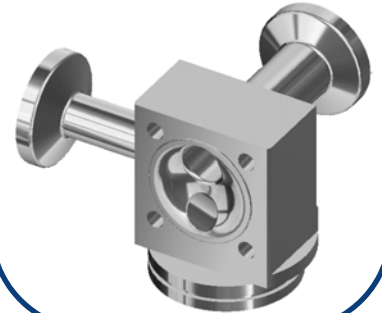
Unlike other designs, also offers inspection and refurbishment services for our sample bottle assemblies.



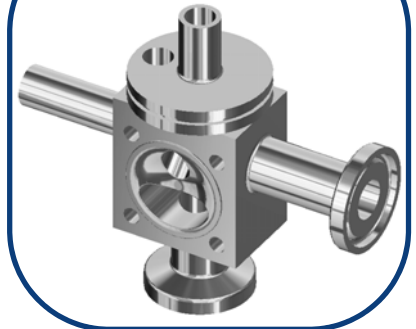
Fabricated Example



Machined Example



Customised Example



The Difference

Offers full customization giving the customer the ideal solution to there process problem. Our Sample body assemblies are available in a variety of bottle sizes ranging from 500 to 2000m. All Body options are manufactured as standard in 316L but exotic materials are available upon request in valve sizes 1/8" to 1/2" with any end connection options to suit your specific needs. If you have a specific Process requirement do not hesitate to contact us for customised design options.

Typical Applications:

- Pharmaceutical Manufacturing
- Bioprocessing
- Cosmetic
- Brewery Service
- Food & Beverage
- Semiconductor
- High Purity Chemicals

SealingSystems

19 Perissou St. 14 343 N.Chalkidona
Athens Greece

Tel. 030 - 2108312002

e-mail: info@sealingsystems.gr

www.sealingsystems.gr